

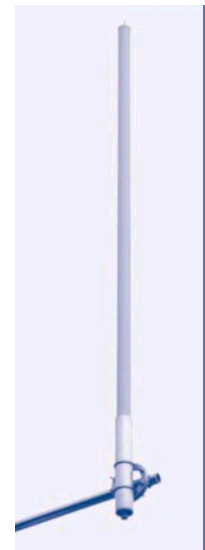


SWIFT3DPMR Series Omnidirectional Antenna 380-400MHz

Digital PMR Applications
Electrical Downtilt
Omnidirectional .
Vertically Polarised

The **Swift Series** has been specifically developed for Public Access and Public Safety Applications, combining an aesthetically pleasing design with excellent performance.

This unique design offers pure omni coverage and allows for both null fill and electrical downtilt options .The Swift Series offers network planners maximum flexibility within a compact design.



ELECTRICAL SPECIFICATIONS	Omnidirectional
Frequency Range	380-400 MHz
Gain (rel ½ wave dipole)	3dBd(5.2dBi)
VSWR (Return loss) :	1.5:1 Typical
Polarisation	Vertical
H-plane beamwidth	Circular to within +/- 0.5dB
E-plane beamwidth	+/- 9°
Electrical Downtilt	0,8°
Power Rating	250 Watts
Impedance	50Ω Nominal
Lightning protection	DC Ground
MECHANICAL SPECIFICATIONS	
Connector(s)	7-16 DIN Female socket
Overall Length	1700 mm
Radiator housing Diameter	90mm
Weight	Kg
Colour	Grey
Rated Wind Velocity	200Km/H
Horizontal Thrust @ Rated Wind Velocity	318N/33Kg
Grounding Cross Section	42mm ²
Mounting	Integral Clamp mounts to a 75 mm diameter pole
MATERIALS	
Radiator	Copper on Glass Reinforced Substrate
Radome	Glass Fibre Tube
STANDARD MODELS	
0 Degrees Tilt	SWIFT30M380T0
8 Degrees Tilt	SWIFT30M380T8